



Fountain Lake Water Lilies, August 8, 2017

FIELD REPORT: Aquatic Plant Surveys for Fountain Lake, Wright County, Minnesota in 2017

2017 Survey Dates: June 14 and August 8

Prepared for:
Fountain Lake Association



Prepared by:
Steve McComas
Blue Water Science
St. Paul, MN 55116

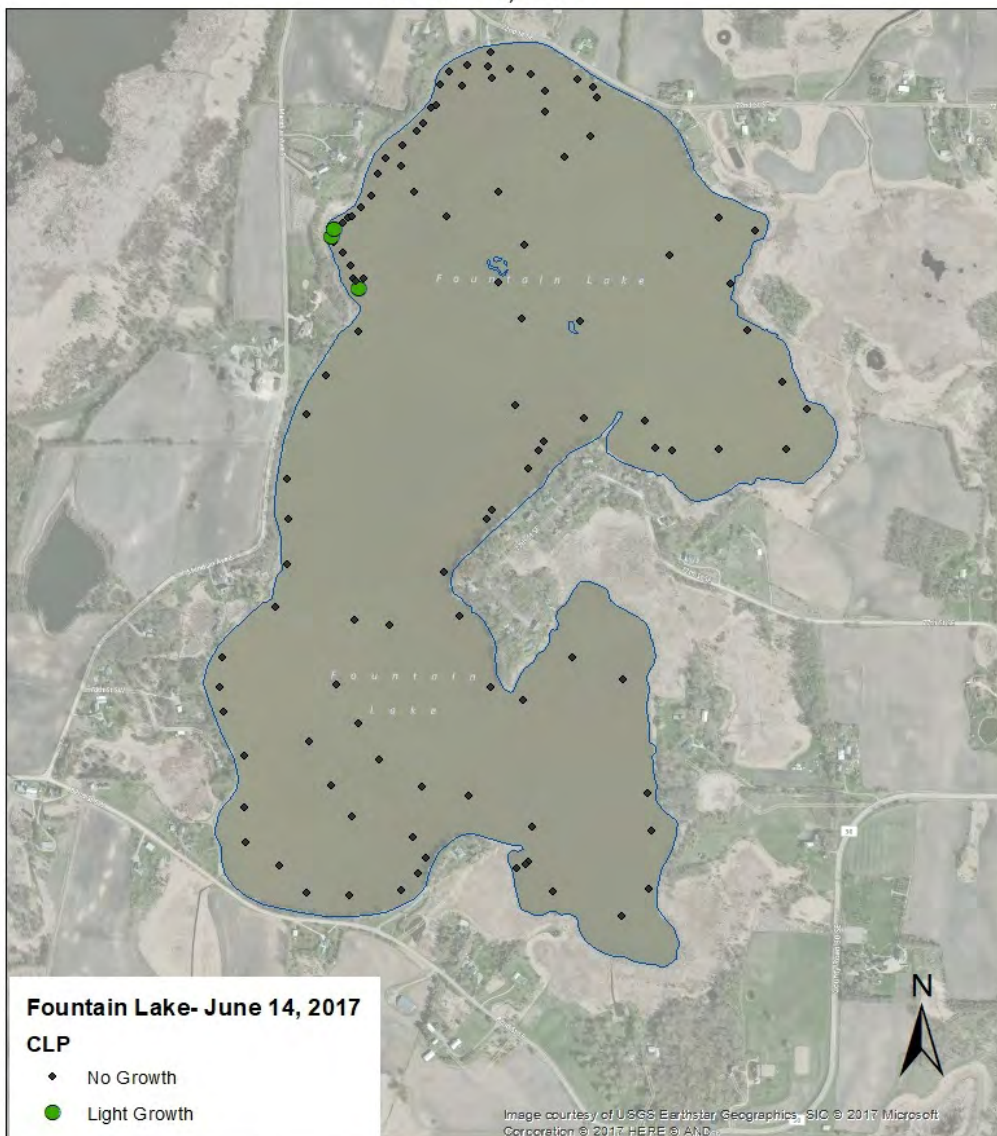
September 2017

FIELD REPORT: Aquatic Plant Surveys for Fountain Lake, Wright County, Minnesota in 2017

June 14, 2017: Curlyleaf Pondweed Delineation.

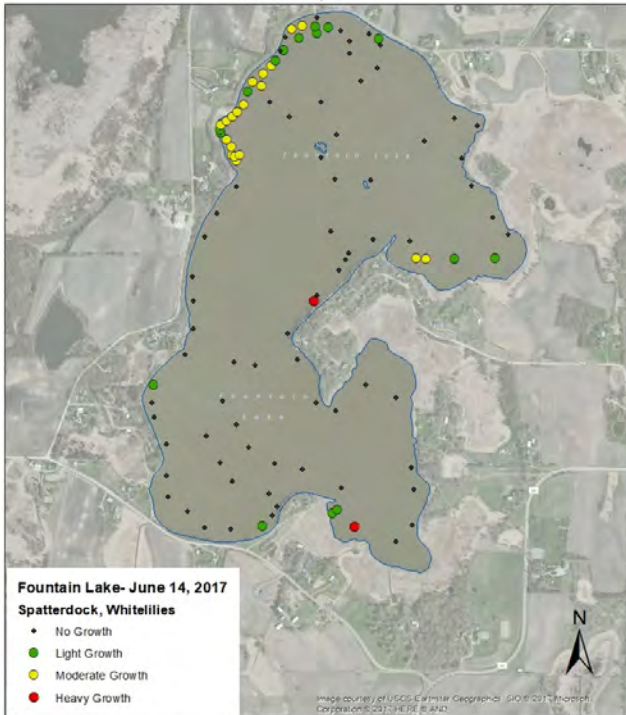
Curlyleaf pondweed was observed at 3 locations and all 3 sites had light growth.

Fountain Lake Curlyleaf Pondweed
June 14, 2017

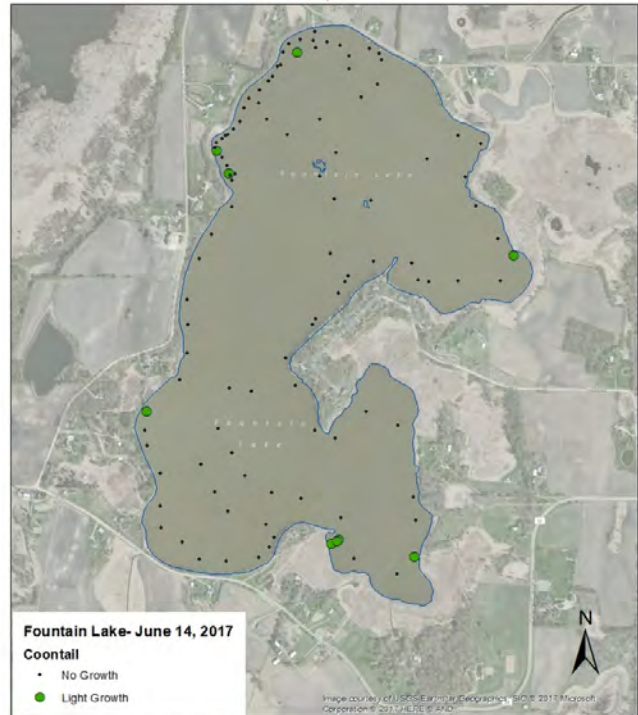


June 14, 2017 Native Aquatic Plant Observations

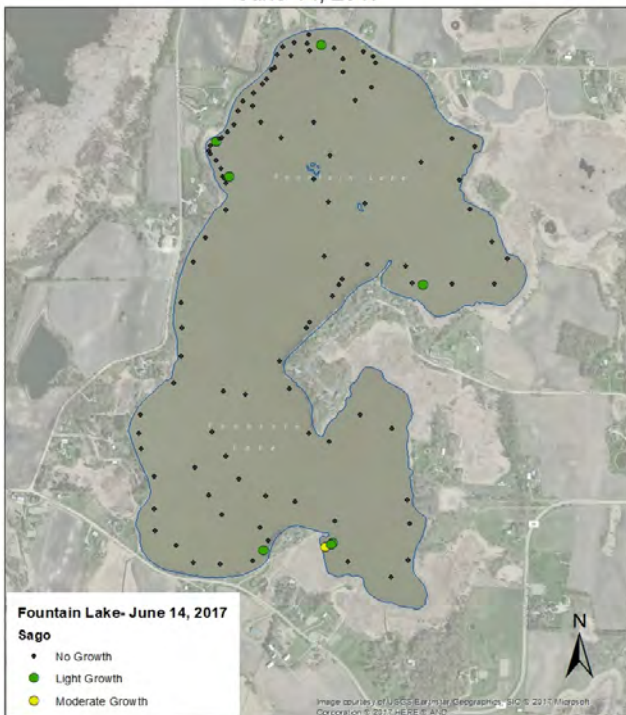
Fountain Lake Lily Growth
June 14, 2017



Fountain Lake Coontail
June 14, 2017



Fountain Lake Sago Pondweed
June 14, 2017



Fountain Lake Stringy Pondweed
June 14, 2017

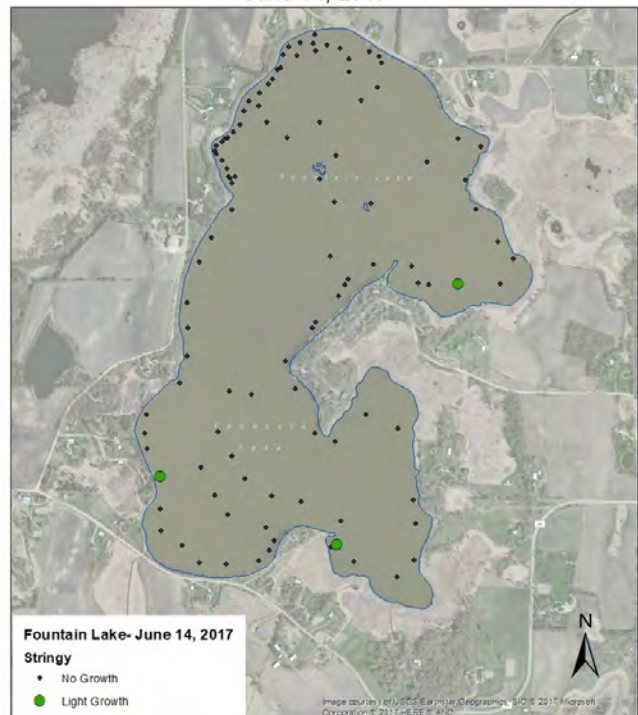


Table 1. Individual site data for June 14, 2017.

Site	Depth (ft)	Cattails	Bulrush	Spatterdock	White lilies	Coontail	CLP	Naiad	Sago	Stringy	No Plants
1	5										1
2	6				1				1		
3	6				1						
4	5				1	1					
5	5				1						
6	5				3						
7	5				3						
8	6										1
9	6										1
10	7										1
11	7										1
12	6										1
13	6										1
14	5				1						
15	5										1
16	5										1
17	7										1
18	7										1
19	7.5										1
20	7										1
21	6										1
22	6										1
23	6										1
24	5			4							
25	6										1
26	8										1
27	8										1
28	7.5										1
29	9										1
30	8										1
31	7										1
32	7										1
33	6										1
34	4					1		1	1		
35	4			1		1		1	3		
36	4			1		1		1	1	1	
37	4				4						
38											1
39	5					2					
40											1
41											1
42	5										1
43	5										1
44	4										1
45	5										1
46	6										1
47	6										1
48	6										1
49	6										1
50	4.5				3						
51	5				3				1		
52	5				2					1	
53	5				1						
54	4					1					
55	5										1
56	5										1
57	4										1
58	4										1
59	4										1
60	6										1
61	5	3									

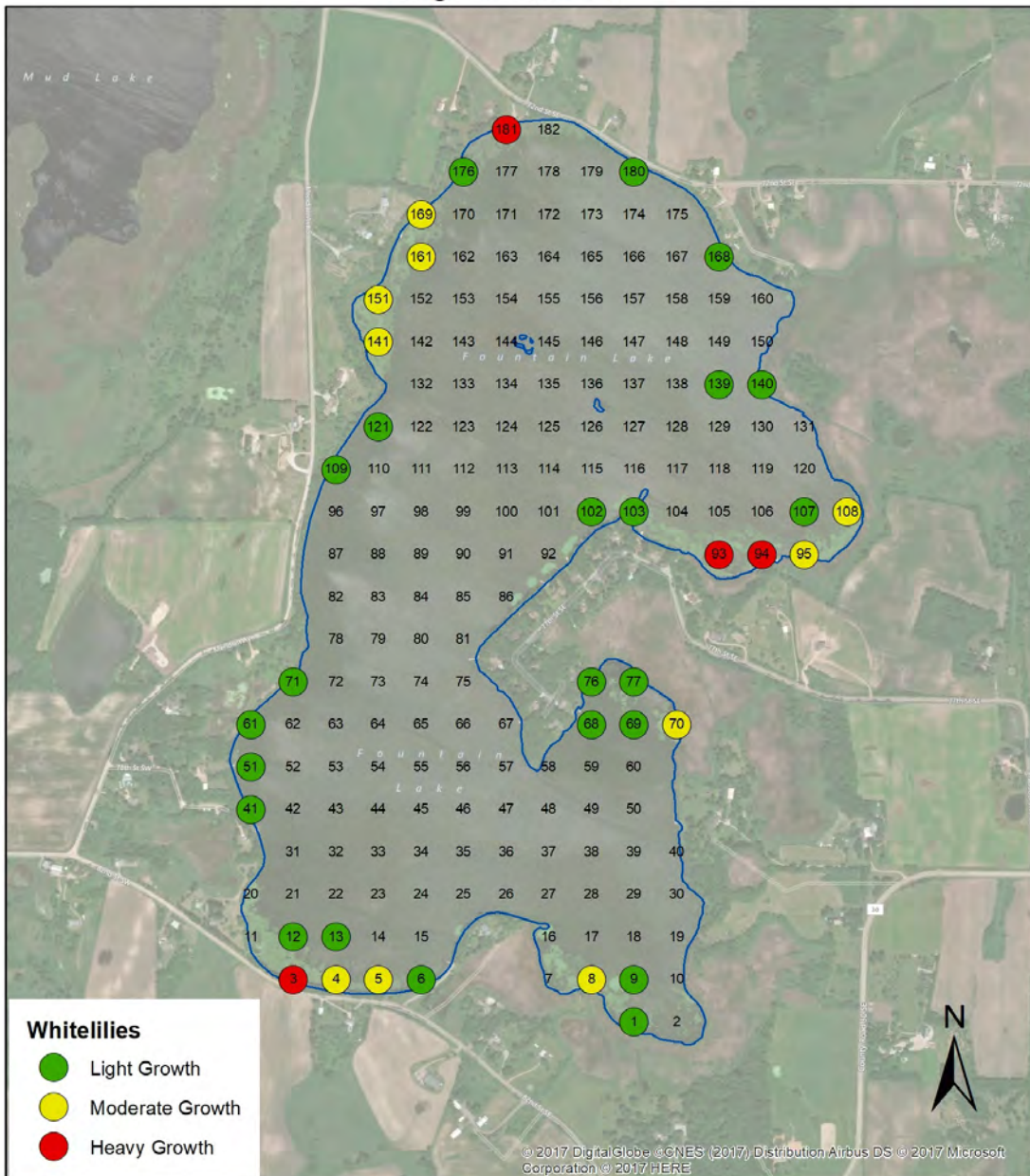
Table 1. Individual site data for June 14, 2017.

Site	Depth (ft)	Cattails	Bulrush	Spatterdock	White lilies	Coontail	CLP	Naiad	Sago	Stringy	No Plants
62	3		3								
63	7										1
64	7										1
65	7										1
66	6										1
67	5										1
68	5								2		
69	5				1						
70	5										1
71	5										1
72	5										1
73	5										1
74	6										1
75	5									1	
76	6										1
77	6										1
78	4				2	1					
79	3										1
80	3										1
81	3										1
82	5										1
83	5										1
84	6										1
85	5										1
86	4			2	3		1				
87	4				3	1					
88	4				3						
89	4				3				1		
90	4				3						
91	3				3						
92	3				2	1					
93	3				2		1				
94	3				3		1				
95	3				3				1		
96	4										1
97	4			3							
98	4				3						
99	4				3						
100	4				2						
101	4				3						
102	4				3						
103	4				1						
104	3										1
105	4										1
106	4				3						
107	4				3						
108	5				2						
109	4										1
Average		3.0	3.0	2.5	2.4	1.1	1.0	1.0	1.4	1.0	
Occurrence (109 sites)		1	1	2	33	9	3	3	8	3	65
% occurrence		1	1	2	30	8	3	3	7	3	

August 8, 2017: Point-Intercept Aquatic Plant Survey

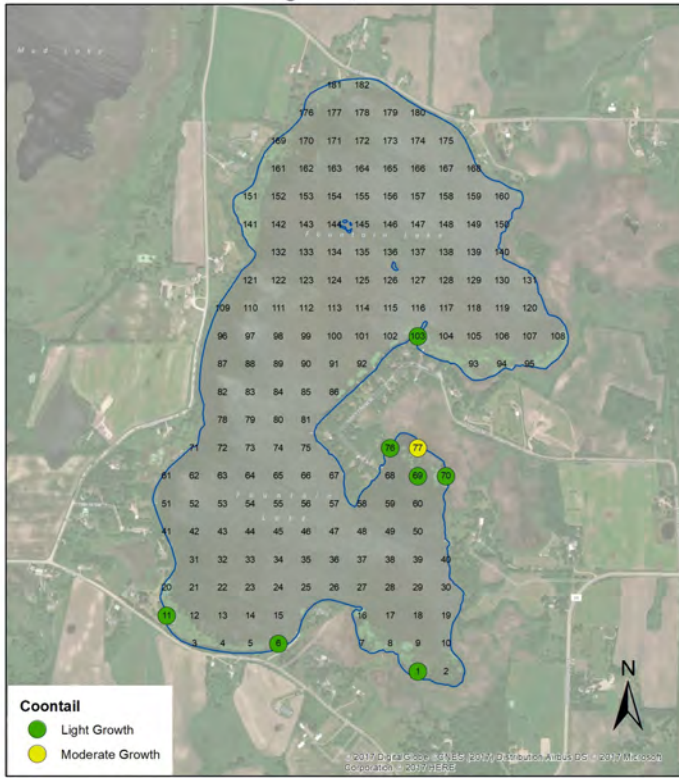
No Eurasian watermilfoil was observed on August 8, 2017. White water lilies were the dominant plant.

Fountain Lake White Lilies August 8, 2017



Coontail and Sago Pondweed Abundance and Distribution

Fountain Lake Coontail
August 8, 2017



Fountain Lake Sago Pondweed
August 8, 2017

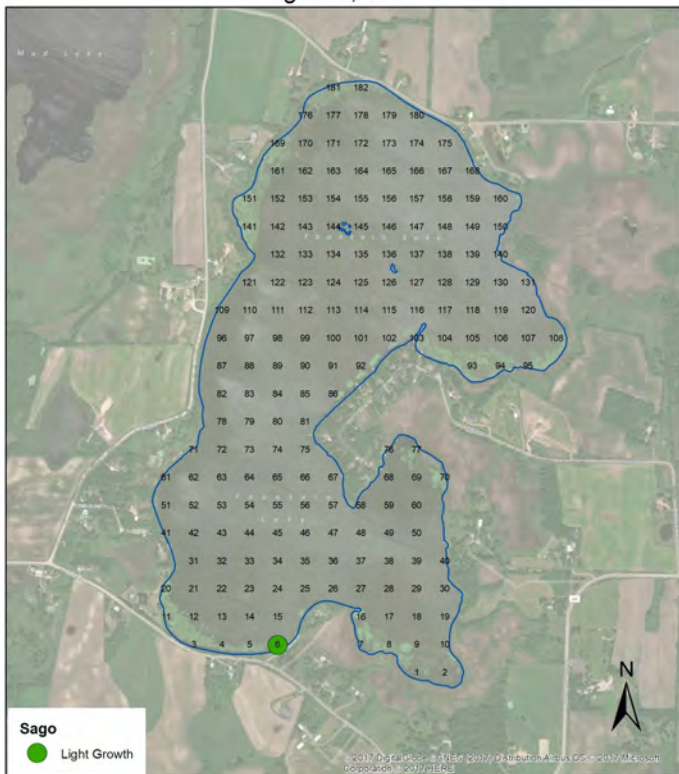


Table 2. Individual site data for August 8, 2017.

Site	Depth (ft)	White lilies	Coontail	Sago	No Plants
1	3	2	2		
2	5				1
3	3	4			
4	4	3			
5	4	3			
6	4	2	1	1	
8	5	3			
9	4	1			
10	4				1
11	3		1		
12	4	2			
13	4	1			
14	5				1
15	5				1
16	4				1
17					1
18	5				1
19	3				1
21	5				1
24	6				1
29	5				1
30	4				1
31	5				1
39	6				1
40	4				1
41	3	1			
48	6				1
49	6				1
50	5				1
51	4	1			
57	4				1
57	5				1
58	3				1
59	6				1
60	5				1
61	4	1			
62	5				1
67	4				1
68	4	1			
69	3	2	2		
70	4	3	1		
71	4	1			
72	6				1
75	6				1
76	4	1	2		
77	3	1	3		
78	6				1
81	5				1
82	6				1
86	5				1
87	6				1
92	4				1
93	3	4			
94	3	4			
95	3	3			
96	4				1
102	5	2			
103	3	2	1		
104	5				1
105	5				1
106	5				1
107	5	1			

Table 2. Individual site data for August 8, 2017.

Site	Depth (ft)	White lilies	Coontail	Sago	No Plants
108	4	3			
109	3	1			
110	5				1
115	5				1
120	4				1
121	4	1			
126	4				1
132	5				1
136	4				1
139	3	1			
140	3	1			
141	4	3			
144	4				1
145	3				1
150	4				1
151	4	3			
152	5				1
161	4	3			
168	4	1			
169	3	3			
170	4				1
174	5				1
175	4				1
176	3	2			
177	4				1
178	4				1
179	4				1
180	3	1			
181	3	4			
182	3				1
Average		2.1	2.0	1.0	
Occurrence (92 sites)		37	2	1	54
% occurrence		40	2	1	